



HEALTHY WORK

**WorkSafe's Position on
Work-Related Health**

WORKSAFE
NEW ZEALAND | MAHI HAUAMARU
AOTEAROA

**GOOD WORK
IS GOOD FOR
HEALTH**

**GOOD HEALTH
IS GOOD FOR
BUSINESS**

WORKSAFE
NEW ZEALAND | HAKI HAUMARU
AOTEAROA

SUPPORTING WORKER HEALTH AND WELLBEING



SUPPORTING WORKER HEALTH AND WELLBEING



SUPPORTING WORKER HEALTH AND WELLBEING



EVERY YEAR*...

600 TO 900 DEATHS



*estimated figures

EVERY YEAR*...

**30,000 NEW CASES OF
SERIOUS ILL-HEALTH**

600 TO 900 DEATHS



*estimated figures

EVERY YEAR*...

MANY MORE UNREPORTED CASES

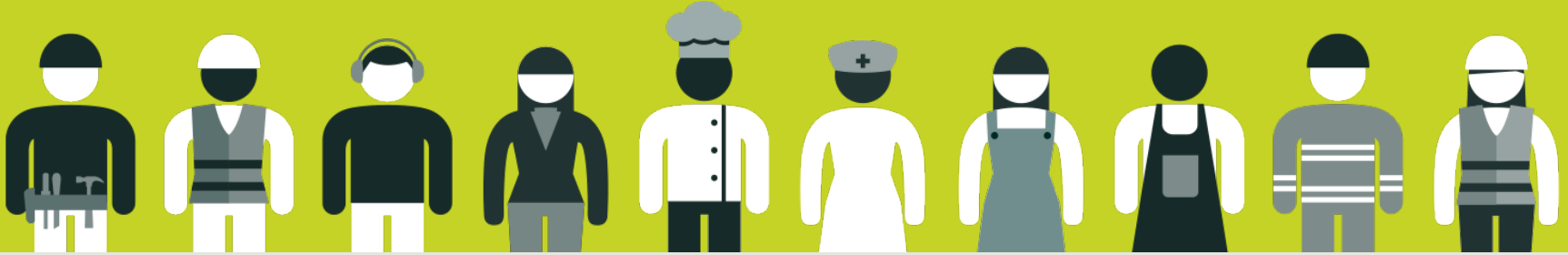
30,000 NEW CASES OF SERIOUS ILL-HEALTH

600 TO 900 DEATHS



*estimated figures

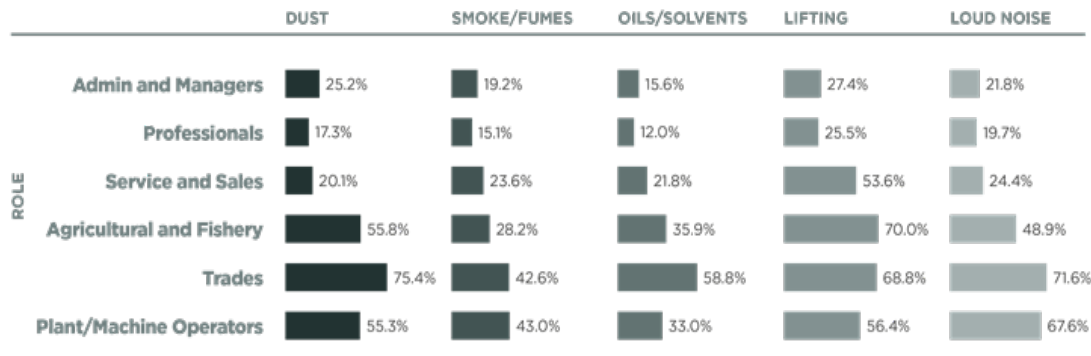
A TYPICAL WORKER IS



15 TIMES

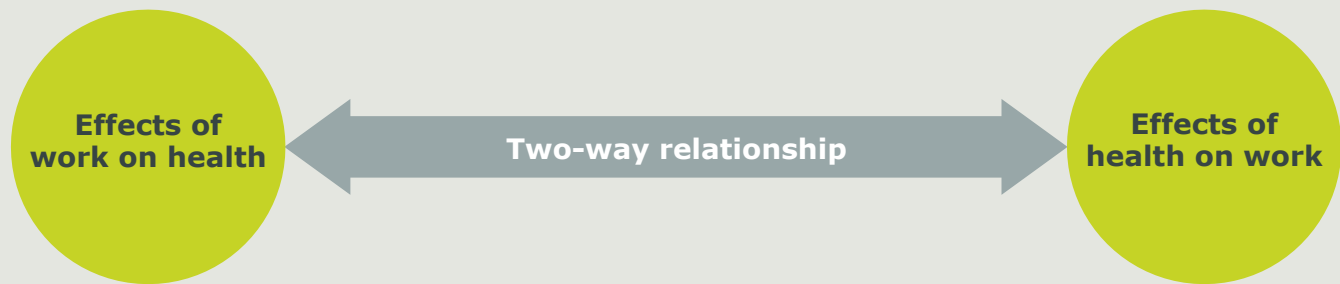
**MORE LIKELY TO DIE FROM
WORK-RELATED ILL-HEALTH THAN
A WORKPLACE SAFETY INCIDENT**

EXPOSURE TO HAZARDS

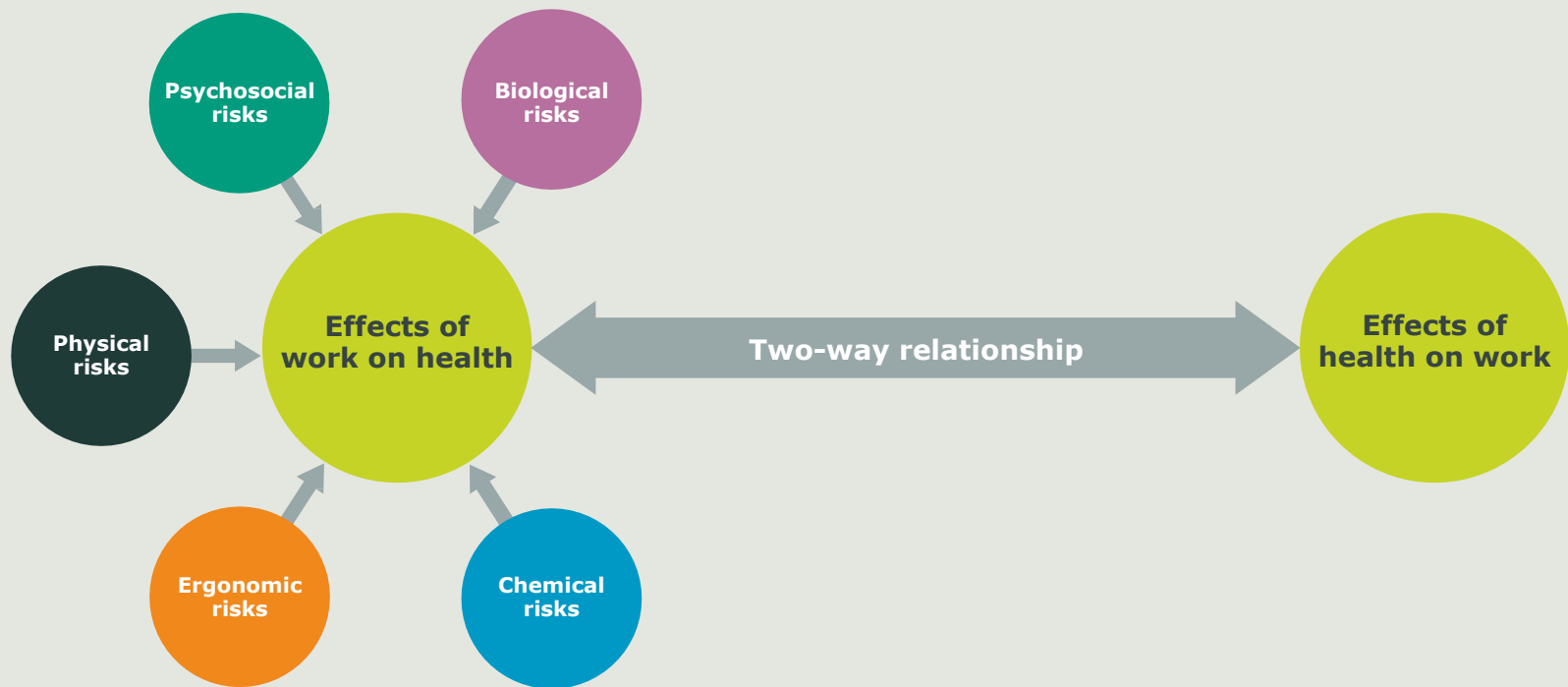


Adapted from Eng, A., et al, (2010). The New Zealand Workforce Survey I: Self-Reported Occupational Exposures. *Annals of Occupational Hygiene*, 54 (2).

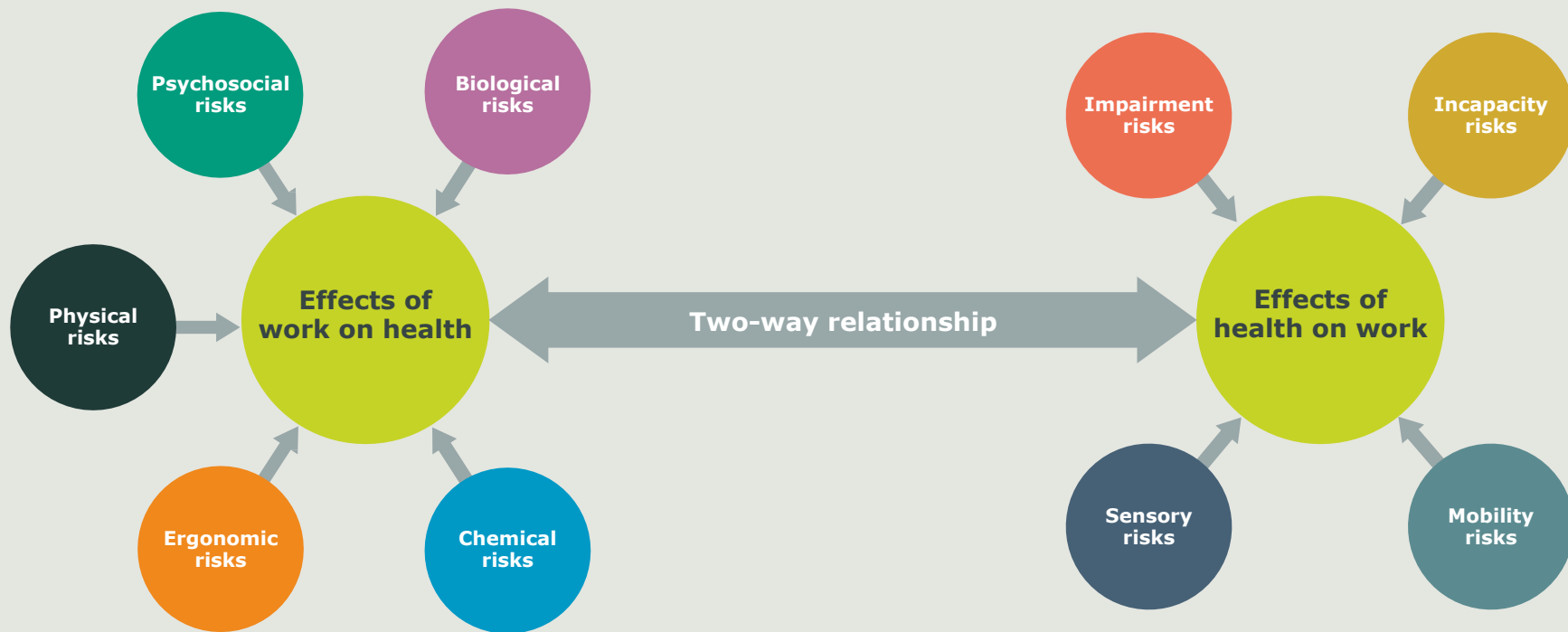
What Is '*Work-Related Health*'?



What Is '*Work-Related Health*'?



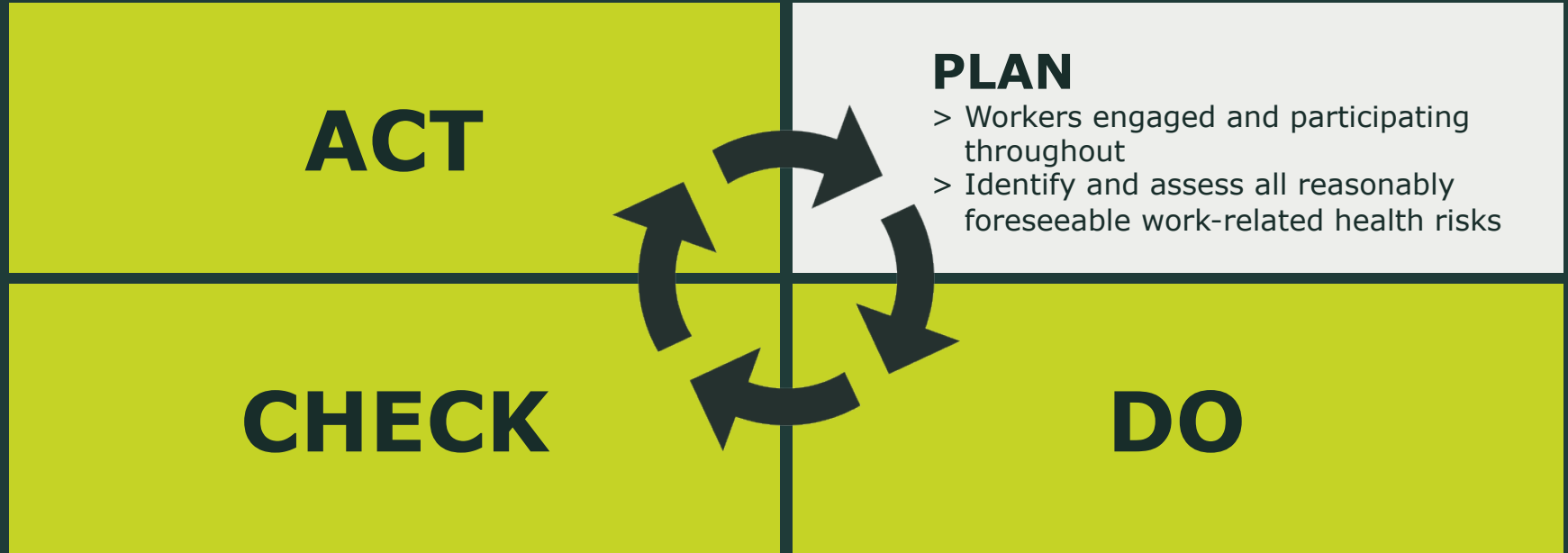
What Is '*Work-Related Health*'?



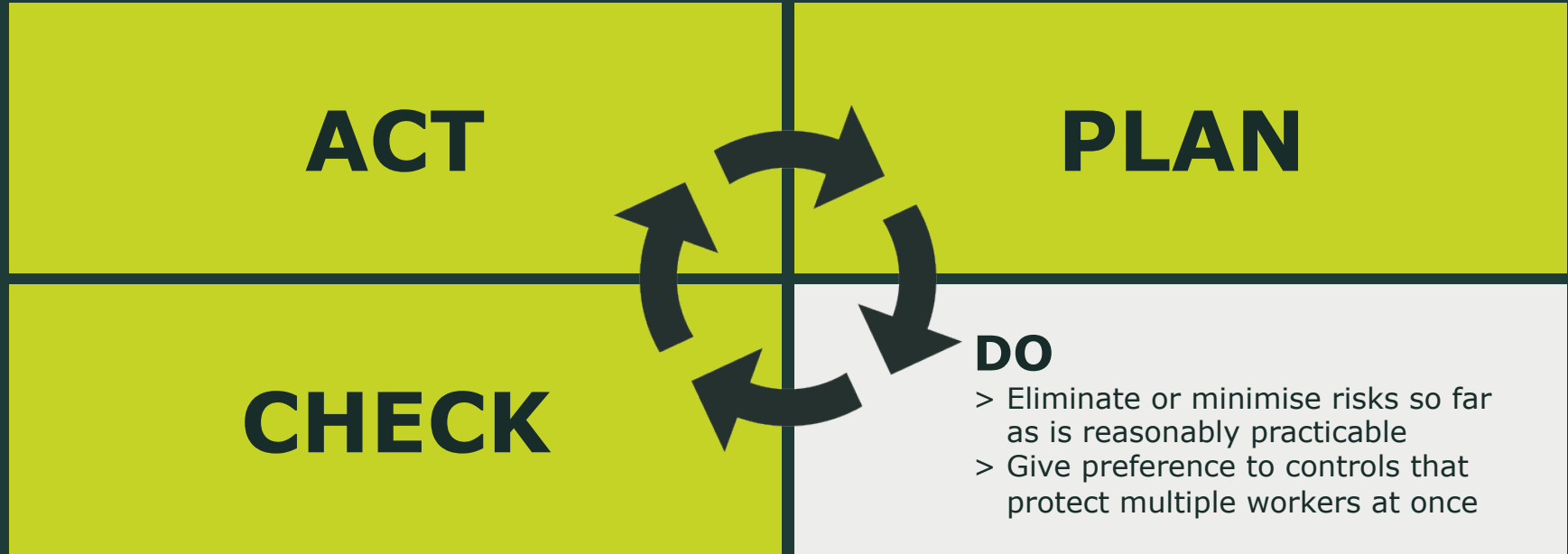
WORKSAFE'S EXPECTATIONS OF DUTY HOLDERS:



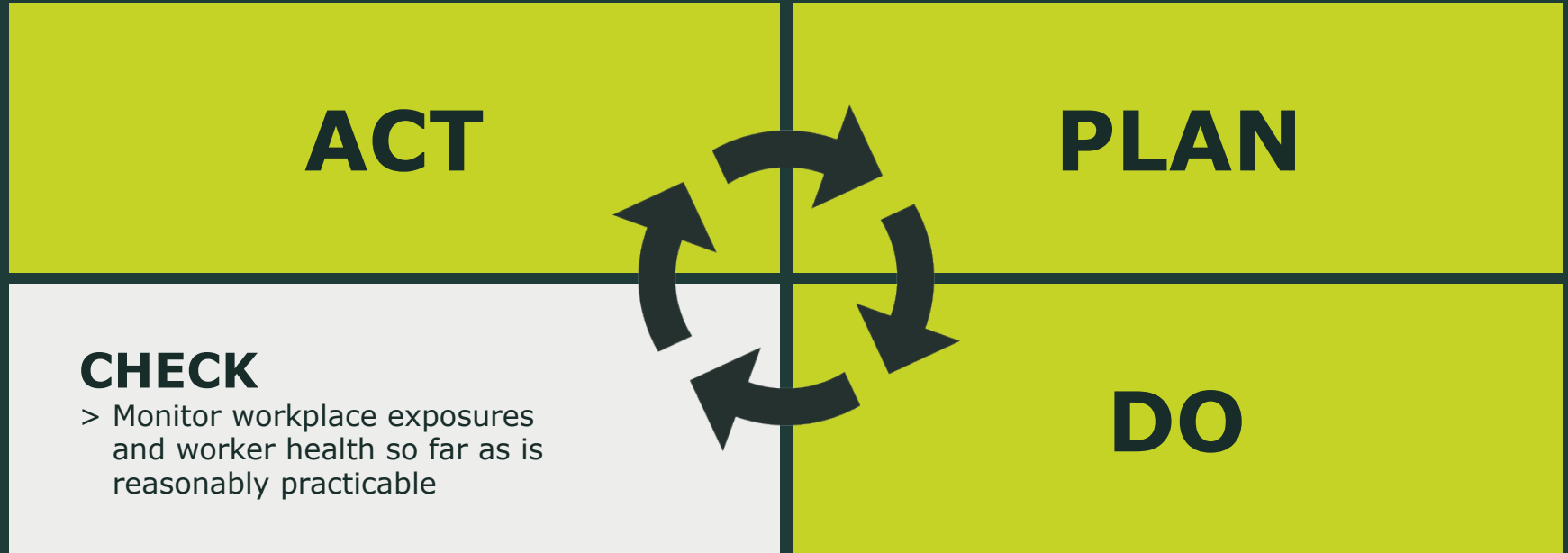
WORKSAFE'S EXPECTATIONS OF DUTY HOLDERS:



WORKSAFE'S EXPECTATIONS OF DUTY HOLDERS:



WORKSAFE'S EXPECTATIONS OF DUTY HOLDERS:



WORKSAFE'S EXPECTATIONS OF DUTY HOLDERS:

ACT

- > Use the results of monitoring, audits etc to make sure the controls in place are continually improved

PLAN

CHECK

DO



WORKSAFE'S LEVERS FOR CHANGE





▶ ENGAGE

**With those who influence
the workplace**

WORKSAFE
NEW ZEALAND | MAHI HAUAMAU
AOTEAROA



EDUCATE

What good looks like and how to take action



▶ **ENFORCE**

Proportionately, consistently

WORKSAFE
NEW ZEALAND | MAHI HAUMARU
AOTEAROA

WORKSAFE'S PLAN FOR WORK-RELATED HEALTH



**INDUSTRY
LEADERSHIP**



**REGULATORY
EFFECTIVENESS**



STEP CHANGE



WORKSAFE
NEW ZEALAND | MAHI HAUMARU
AOTEAROA

For more information visit:
worksafe.govt.nz



facebook.com/nzworksafe



linkedin.com/company/worksafe-new-zealand



twitter.com/WorkSafeNZ

WORKSAFE
NEW ZEALAND | MANI HAUMARU
AOTEAROA